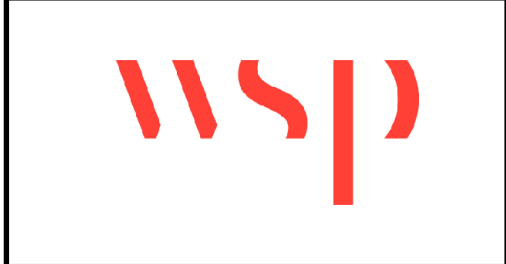
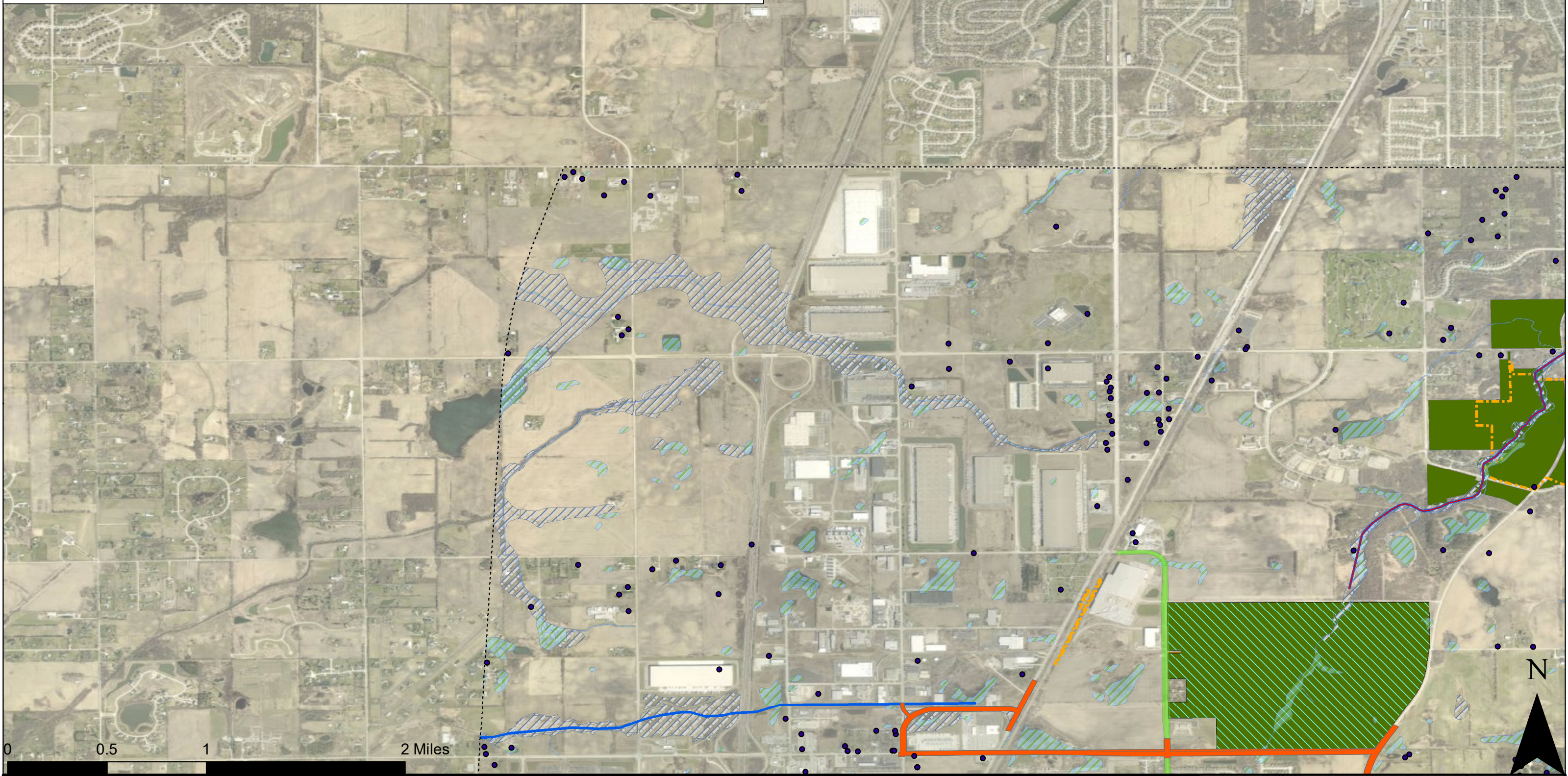
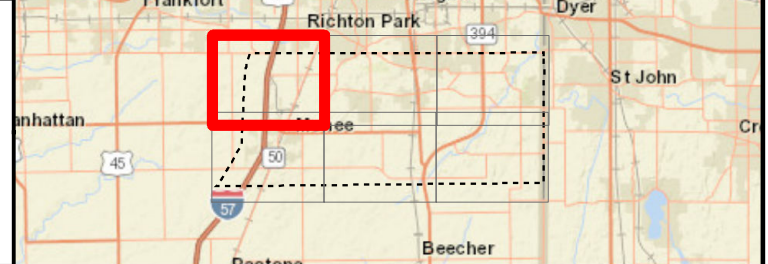


Legend

- Water Wells
- Project area limits
- Crete-Monee North Alternatives
- Crete-Monee South Alternatives
- Dralle/Crete-Monee Alternatives
- Pauling-Goodenow Alternatives
- Pauling-Goodenow/Crete-Monee Alternatives
- 303(d)-impaired waters
- 305(b) streams
- Wetlands
- Floodplain
- INAI
- OSLAD
- Forest Preserve District of Will County
- Illinois Nature Preserves
- Parks

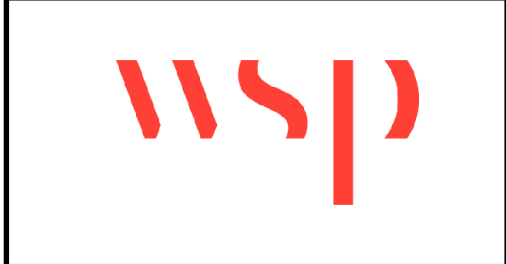
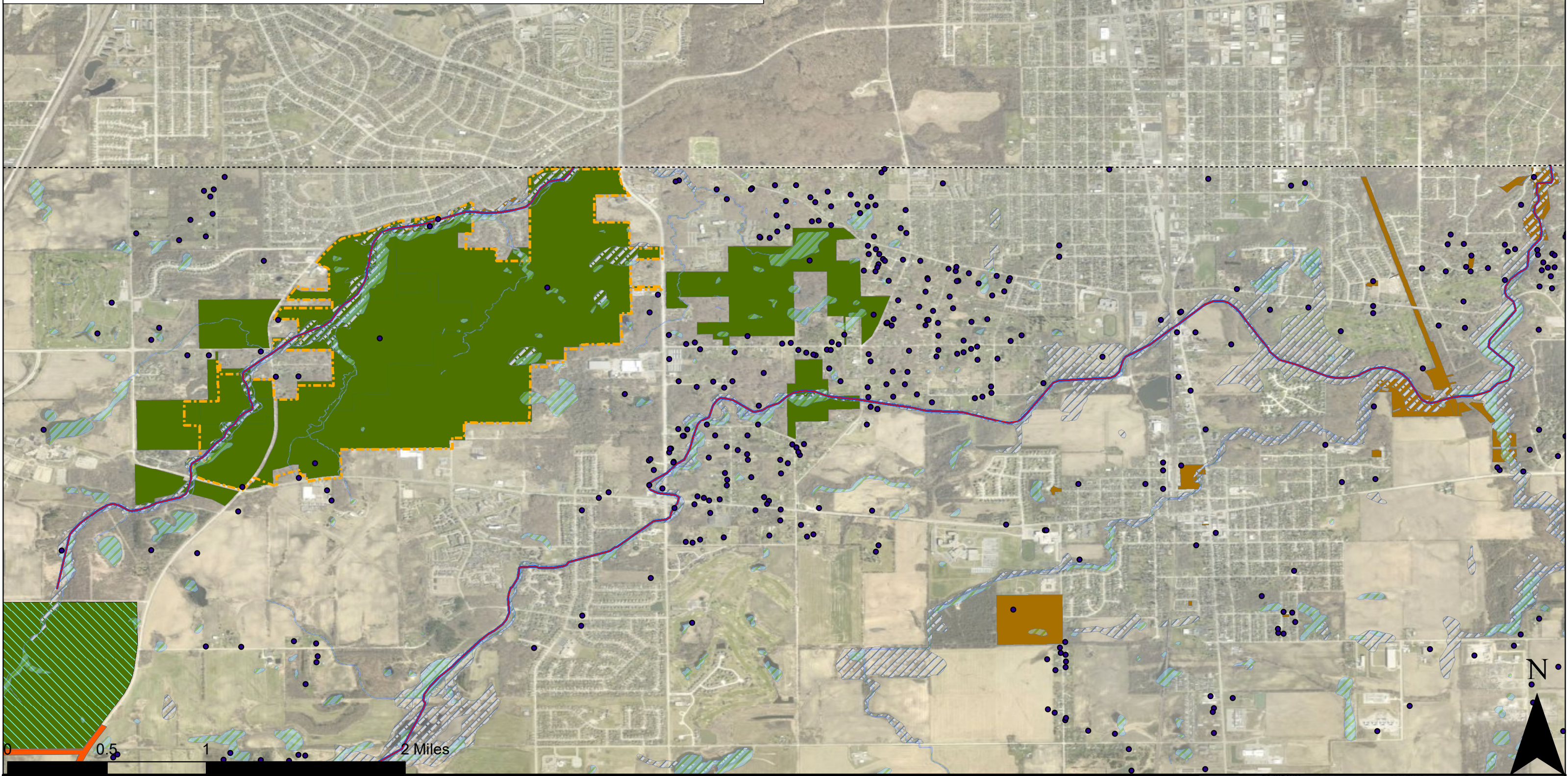


Natural Resources

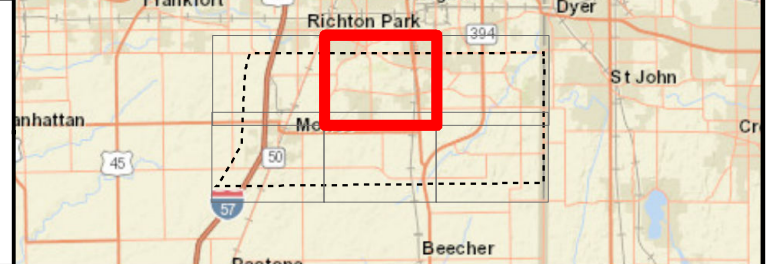


Legend

| | | | |
|--------------------------------|---|----------------|---|
| ● Water Wells | Dralle/Crete-Monee Alternatives | 305(b) streams | OSLAD |
| --- Project area limits | Pauling-Goodenow Alternatives | Wetlands | Forest Preserve District of Will County |
| Crete-Monee North Alternatives | Pauling-Goodenow/Crete-Monee Alternatives | Floodplain | Illinois Nature Preserves |
| Crete-Monee South Alternatives | 303(d)-impaired waters | INAI | Parks |

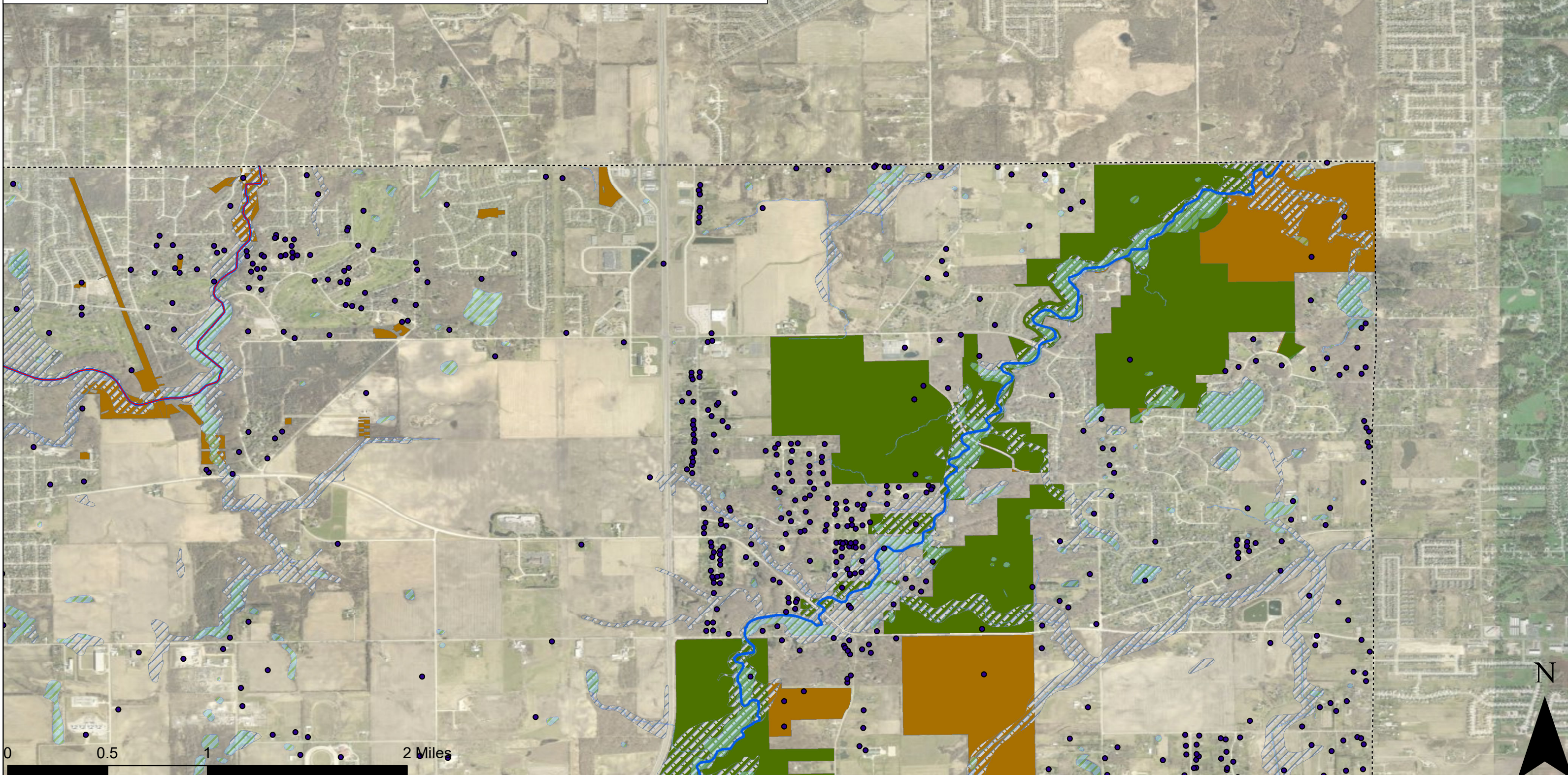


Natural Resources

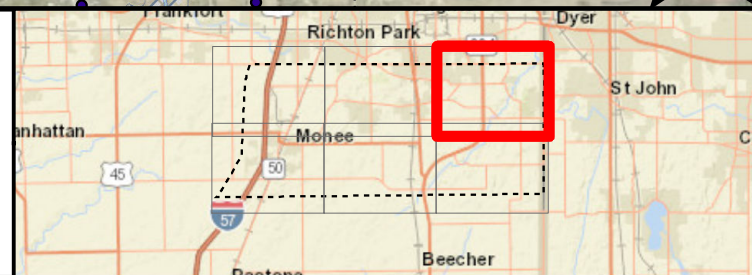


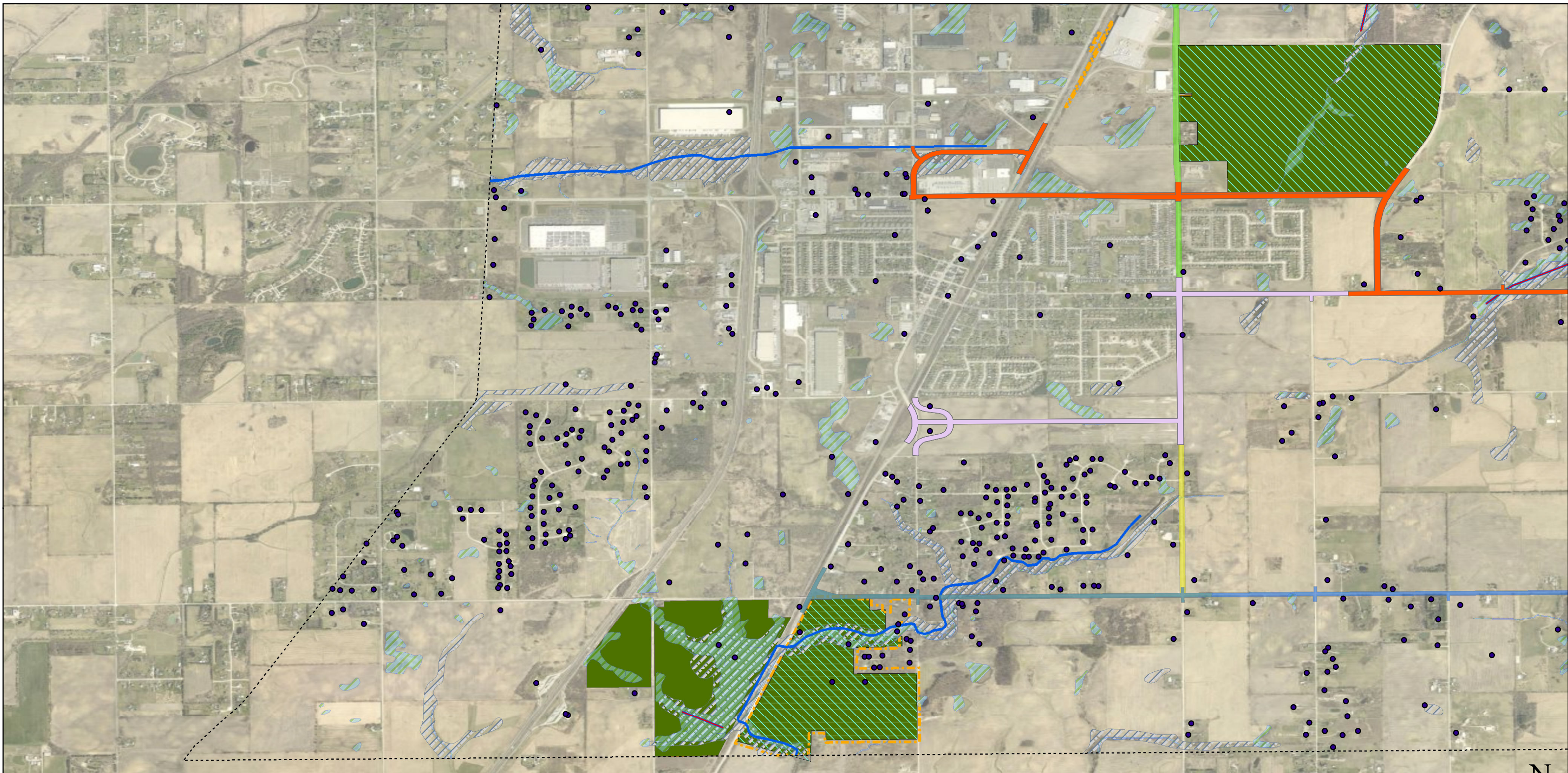
Legend

- Water Wells
- Project area limits
- Crete-Monee North Alternatives
- Crete-Monee South Alternatives
- Dralle/Crete-Monee Alternatives
- Pauling-Goodenow Alternatives
- Pauling-Goodenow/Crete-Monee Alternatives
- 303(d)-impaired waters
- 305(b) streams
- ▨ Wetlands
- ▨ Floodplain
- ▨ INAI
- ▨ OSLAD
- Forest Preserve District of Will County
- ▨ Illinois Nature Preserves
- Parks

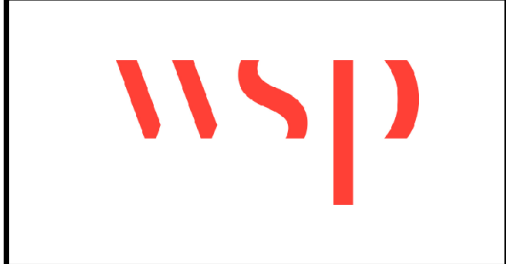


Natural Resources

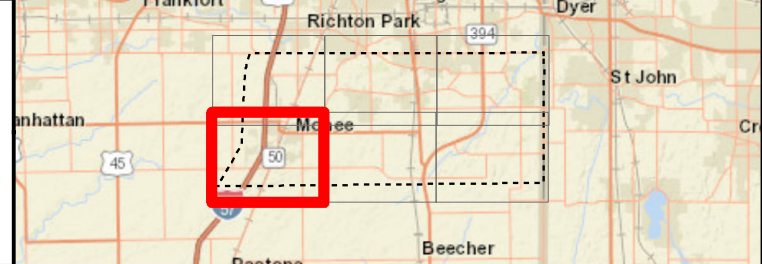


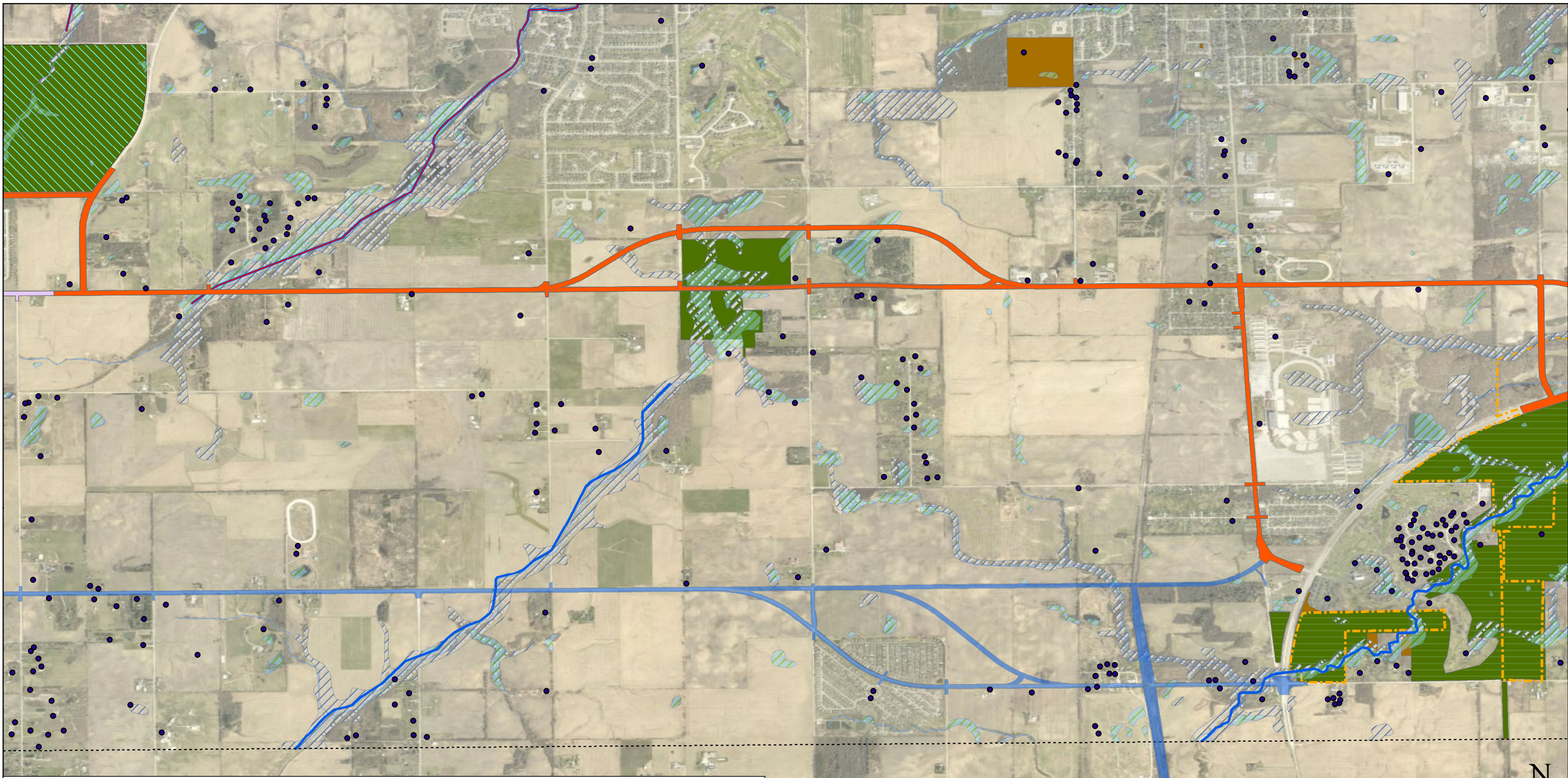


| Legend | | | |
|----------------------------------|---|------------------|---|
| ● Water Wells | ■ Dralle/Crete-Monee Alternatives | — 305(b) streams | ▨ OSLAD |
| - - - Project area limits | ■ Pauling-Goodenow Alternatives | ▨ Wetlands | ■ Forest Preserve District of Will County |
| ■ Crete-Monee North Alternatives | ■ Pauling-Goodenow/Crete-Monee Alternatives | ▨ Floodplain | ■ Illinois Nature Preserves |
| ■ Crete-Monee South Alternatives | — 303(d)-impaired waters | ▨ INAI | ■ Parks |



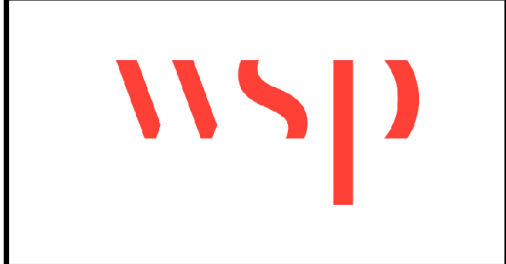
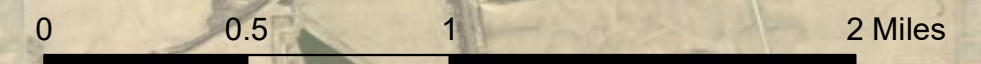
Natural Resources



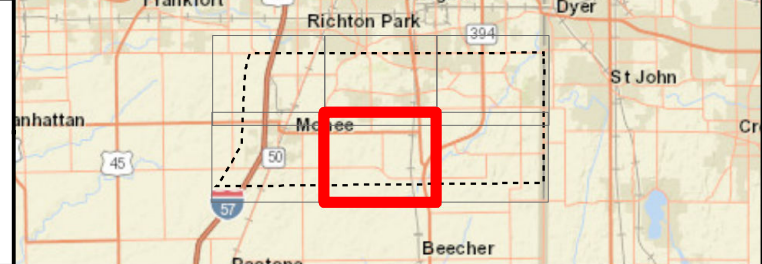


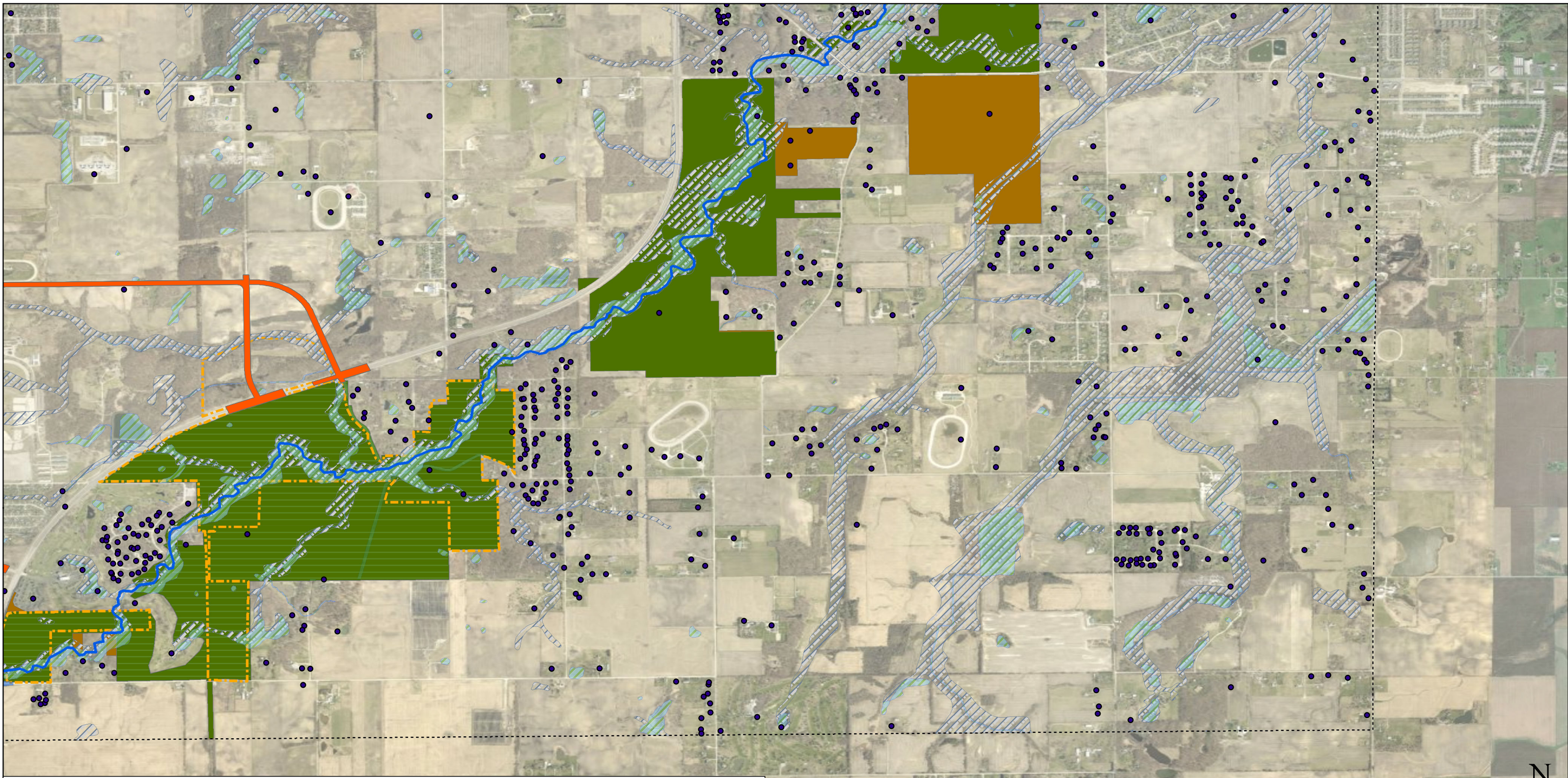
Legend

| | | | |
|----------------------------------|---|------------------|---|
| ● Water Wells | ■ Dralle/Crete-Monee Alternatives | — 305(b) streams | ▨ OSLAD |
| - - - Project area limits | ■ Pauling-Goodenow Alternatives | ▨ Wetlands | ■ Forest Preserve District of Will County |
| — Crete-Monee North Alternatives | ■ Pauling-Goodenow/Crete-Monee Alternatives | ▨ Floodplain | ▨ Illinois Nature Preserves |
| — Crete-Monee South Alternatives | — 303(d)-impaired waters | ▨ INAI | ■ Parks |

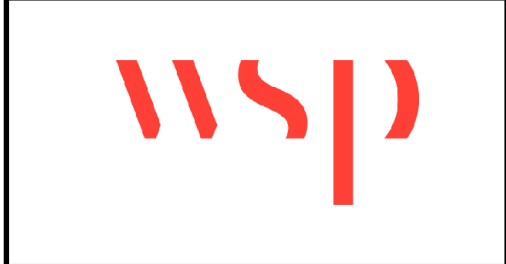


Natural Resources





| Legend | | | |
|--------------------------------|---|----------------|---|
| ● Water Wells | Dralle/Crete-Monee Alternatives | 305(b) streams | OSLAD |
| --- Project area limits | Pauling-Goodenow Alternatives | Wetlands | Forest Preserve District of Will County |
| Crete-Monee North Alternatives | Pauling-Goodenow/Crete-Monee Alternatives | Floodplain | Illinois Nature Preserves |
| Crete-Monee South Alternatives | 303(d)-impaired waters | INAI | Parks |



Natural Resources

